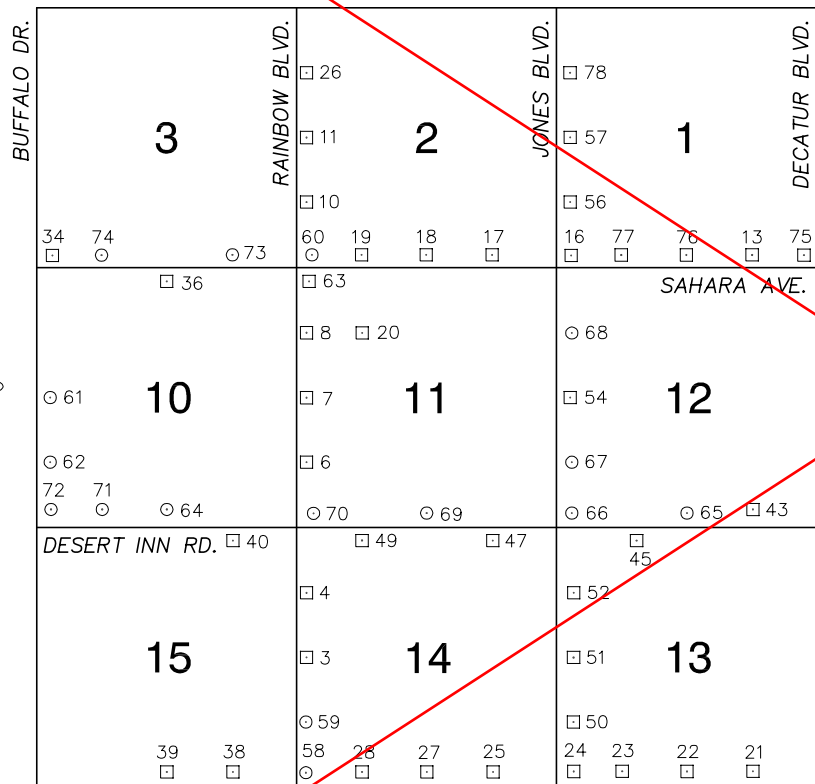


FOR REFERENCE ONLY

*2018 BENCHMARK NETWORK ADJUSTMENT SUPERSEDES THE 2003 BENCHMARK BOOK

**Township 21 South, Range 60 East
Northeast Quarter**

CHARLESTON BLVD.



FLAMINGO RD.

NORTH AMERICAN VERTICAL
DATUM OF 1988
- ALL ELEVATIONS IN METERS -

No.	STATION	ELEVATION (METERS)	DESCRIPTION
1			LOST 2003
2			LOST 2003
3	7C10 14W4	720.710	F RIVET AND SQUARE ALUMINUM PLATE IN TOP OF CURB, N NORTHEAST CORNER OF RAINBOW BLVD. AND TWAIN AVE. D NEAR THE PC OF RAINBOW BLVD.
4	7C10 14NWW6	722.145	F RIVET AND SQUARE ALUMINUM PLATE IN TOP OF CURB, N NORTHEAST CORNER OF SPRING MOUNTAIN RD. AND D RAINBOW BLVD. NEAR THE PC OF RAINBOW BLVD.
5			LOST 2003
6	7C10 11SWW6	725.760	F RIVET AND SQUARE ALUMINUM PLATE IN TOP OF CURB, N NORTHEAST CORNER OF RAINBOW BLVD. AND PALMYRA D AVE. NEAR THE PC OF RAINBOW BLVD.
7	7C10 11W4	727.028	F RIVET AND SQUARE ALUMINUM PLATE IN TOP OF CURB, N NORTHEAST CORNER OF RAINBOW BLVD. AND EDNA AVE. D NEAR THE PC OF RAINBOW BLVD.
8	7C10 11NWW6	727.793	F RIVET AND SQUARE ALUMINUM PLATE IN TOP OF CURB, N NORTHEAST CORNER OF RAINBOW BLVD. AND ELDORA D ST. NEAR THE PC OF RAINBOW BLVD.
9			LOST 2003
10	7C10 2SWW6	731.250	F RIVET AND SQUARE ALUMINUM PLATE IN TOP OF CURB, N NORTHEAST CORNER OF RAINBOW BLVD. AND O'BANNON D DR. NEAR THE PC OF RAINBOW BLVD.
11	7C10 2W4	731.634	F RIVET AND SQUARE ALUMINUM PLATE IN TOP OF CURB, N NORTHEAST CORNER OF RAINBOW BLVD. AND OAKLEY D BLVD. NEAR THE PC OF RAINBOW BLVD.

CLARK COUNTY VERTICAL CONTROL v.2003

CLARK COUNTY SURVEYOR'S OFFICE
5051 SOUTH PARADISE ROAD
LAS VEGAS, NEVADA 89119
(702) 455-0640

CONVERSION FACTOR:
METERS X $\left(\frac{3937}{1200}\right)$ = U.S. SURVEY FEET

REVISED 2003

SHEET
1 OF 4

21-60
NE

FOR REFERENCE ONLY

***2018 BENCHMARK NETWORK ADJUSTMENT SUPERSEDES THE 2003 BENCHMARK BOOK**

No.	STATION	ELEVATION (METERS)	DESCRIPTION	No.	STATION	ELEVATION (METERS)	DESCRIPTION		
12			LOST 2003	25	7C10 14SSE6	705.299	F N D RIVET AND SQUARE ALUMINUM PLATE IN TOP OF CURB, NORTHEAST CORNER OF FLAMINGO RD. AND EL CAMINO DR. NEAR THE PC OF FLAMINGO RD.		
13	7C10 1SSE6	681.686	F N D RIVET AND SQUARE ALUMINUM PLATE IN TOP OF CURB, NORTHEAST CORNER OF SAHARA AVE. AND EDMOND ST. NEAR THE PC OF SAHARA AVE.	26	7C10 2NWW6	732.354	F N D RIVET AND SQUARE ALUMINUM PLATE IN TOP OF CURB, NORTHEAST CORNER OF RAINBOW BLVD. AND DEL REY AVE. NEAR THE PC OF RAINBOW BLVD.		
14			LOST 2003	27	7C10 14S4	707.847	F N D RIVET AND SQUARE ALUMINUM PLATE IN TOP OF CURB, NORTHEAST CORNER OF TORREY PINES DR. AND FLAMINGO RD. NEAR THE PC OF FLAMINGO RD.		
15			LOST 2003	28	7C10 14SSW6	712.975	F N D RIVET AND SQUARE ALUMINUM PLATE IN TOP OF CURB, NORTHEAST CORNER OF FLAMINGO RD. AND REDWOOD ST. NEAR THE PC OF FLAMINGO RD.		
16	7C10 1SWS	698.545	F N D RIVET AND SQUARE ALUMINUM PLATE IN TOP OF CURB, NORTHEAST CORNER OF SAHARA AVE. AND JONES BLVD. NEAR THE PC OF SAHARA AVE.	29			LOST 2003		
17	7C10 2SSE6	704.337	F N D RIVET AND SQUARE ALUMINUM PLATE IN TOP OF CURB, NORTHEAST CORNER OF SAHARA AVE. AND CHUCK LENZIE CT./EL CAMINO RD. NEAR THE PC OF SAHARA AVE.	30			LOST 2003		
18	7C10 2S4	712.247	F N D RIVET AND SQUARE ALUMINUM PLATE IN TOP OF CURB, NORTHWEST CORNER OF TORREY PINES DR. AND SAHARA AVE. NEAR THE PC OF SAHARA AVE.	31			LOST 2003		
19	7C10 2SSW6	719.751	F N D RIVET AND SQUARE ALUMINUM PLATE IN TOP OF CURB, NORTHEAST CORNER OF SAHARA AVE. AND REDWOOD ST. NEAR THE PC OF SAHARA AVE.	32			LOST 2003		
20	7C10 11NW6	719.776	F N D RIVET AND SQUARE ALUMINUM PLATE IN TOP OF CURB, NORTHWEST CORNER OF ELDORA AVE. AND REDWOOD ST. NEAR THE PC OF REDWOOD ST.	33			LOST 2003		
21	7C10 13SSE6	691.907	F N D RIVET AND SQUARE ALUMINUM PLATE IN TOP OF CURB, NORTHEAST CORNER OF FLAMINGO RD. AND EDMOND ST. NEAR THE PC OF FLAMINGO RD.	34	2C10 3SWS	767.596	F N D RIVET AND SQUARE ALUMINUM PLATE IN TOP OF CURB, NORTHEAST CORNER OF SAHARA AVE. AND BUFFALO DR. NEAR THE PC OF SAHARA AVE.		
22	7C10 13S4	695.154	F N D RIVET AND SQUARE ALUMINUM PLATE IN TOP OF CURB, NORTHEAST CORNER OF FLAMINGO RD. AND LINDELL RD. NEAR THE PC OF FLAMINGO RD.	35			LOST 2003		
23	7C10 13SSW6	700.012	F N D RIVET AND SQUARE ALUMINUM PLATE IN TOP OF CURB, NORTHEAST CORNER OF FLAMINGO RD. AND DUNEVILLE ST. NEAR THE PC OF FLAMINGO RD.	CLARK COUNTY VERTICAL CONTROL v.2003					
24	7C10 13SWS	702.264	F N D RIVET AND SQUARE ALUMINUM PLATE IN TOP OF CURB, NORTHEAST CORNER OF FLAMINGO RD. AND JONES BLVD. NEAR THE PC OF FLAMINGO RD.	CLARK COUNTY SURVEYOR'S OFFICE 5051 SOUTH PARADISE ROAD LAS VEGAS, NEVADA 89119 (702) 455-0640			CONVERSION FACTOR: METERS X $\left(\frac{3937}{1200}\right)$ = U.S. SURVEY FEET		
							REVISED 2003	SHEET 2 OF 4	21-60 NE

FOR REFERENCE ONLY

***2018 BENCHMARK NETWORK ADJUSTMENT SUPERSEDES THE 2003 BENCHMARK BOOK**

No.	STATION	ELEVATION (METERS)	DESCRIPTION	No.	STATION	ELEVATION (METERS)	DESCRIPTION
36	7C10 10N4	747.956	F N D RIVET AND SQUARE ALUMINUM PLATE NORTHEAST CORNER OF FIRE HYDRANT BASE, 400' SOUTH OF SAHARA AVE. WEST SIDE OF TENAYA WAY.	49	7C10 14NNW6	715.208	F N D RIVET AND SQUARE ALUMINUM PLATE IN TOP OF CURB, SOUTH SIDE OF DESERT INN RD. NEAR REDWOOD ST. ALIGNMENT.
37			LOST 2003	50	7C10 13SWW6	701.948	F N D 2" DOME HEAD BRASS CAP REFERENCE MONUMENT IN TOP OF CURB, NORTHEAST CORNER OF JONES BLVD. AND VIKING RD. NEAR THE PC OF JONES BLVD.
38	7C10 15SSE6	724.320	F N D RIVET AND SQUARE ALUMINUM PLATE IN TOP OF CURB, NORTHEAST CORNER OF FLAMINGO RD. AND SANDALWOOD DR. NEAR THE PC OF FLAMINGO RD.	51	7C10 13W4	700.218	F N D 2" DOME HEAD BRASS CAP REFERENCE MONUMENT IN TOP OF CURB, NORTHEAST CORNER OF JONES BLVD. AND TWAIN AVE. NEAR THE PC OF JONES BLVD.
39	7C10 15S4	731.928	F N D RIVET AND SQUARE ALUMINUM PLATE IN TOP OF CURB, NORTHEAST CORNER OF FLAMINGO RD. AND TENAYA WAY NEAR THE PC OF FLAMINGO RD.	52	7C10 13NWW6	699.504	F N D RIVET AND SQUARE ALUMINUM PLATE IN TOP OF CURB, NORTHEAST CORNER OF JONES BLVD. AND SPRING MOUNTAIN RD. NEAR THE PC OF JONES BLVD.
40	7C10 15NNE6	731.964	F N D RIVET AND SQUARE ALUMINUM PLATE IN TOP OF CURB, SOUTHEAST CORNER OF DESERT INN RD. AND MONTESSOURI ST. NEAR THE PC OF DESERT INN RD.	53			LOST 2003
41			LOST 2003	54	7C10 12W4	698.070	F N D RIVET AND SQUARE ALUMINUM PLATE IN TOP OF CURB, NORTHEAST CORNER OF JONES BLVD. AND EDNA AVE. NEAR THE PC OF JONES BLVD.
42			LOST 2003	55			LOST 2003
43	7C10 12SSE6	680.444	F N D RIVET AND SQUARE ALUMINUM PLATE IN TOP OF CURB, NORTHEAST CORNER OF DESERT INN RD. AND MOUNTAIN SPRINGS RD. NEAR THE PC OF DESERT INN RD.	56	7C10 1SWW6	698.402	F N D RIVET AND SQUARE ALUMINUM PLATE IN TOP OF CURB, NORTHEAST CORNER OF JONES BLVD. AND O'BANNON DR. NEAR THE PC OF JONES BLVD.
44			LOST 2003	57	7C10 1W4	699.331	F N D RIVET AND SQUARE ALUMINUM PLATE IN TOP OF CURB, NORTHEAST CORNER OF JONES BLVD. AND OAKLEY BLVD. NEAR THE PC OF JONES BLVD.
45	7C10 13NNW6	695.572	F N D RIVET AND SQUARE ALUMINUM PLATE IN TOP OF CURB, SOUTHEAST CORNER OF DESERT INN RD. AND A CUL-DE-SAC, 200' EAST OF DUNEVILLE ST.	58	7C10 14SWS 1997	718.235	S E T RIVET AND ROUND ALUMINUM PLATE IN TOP OF CURB, NORTHEAST CORNER OF RAINBOW BLVD. AND FLAMINGO RD. NEAR THE PC OF RAINBOW BLVD.
46			LOST 2003	59	7C10 14SWW6 1997	718.343	S E T RIVET AND ROUND ALUMINUM PLATE IN TOP OF CURB, NORTHEAST CORNER OF RAINBOW BLVD. AND ENDORA DR. NEAR THE PC OF RAINBOW BLVD.
47	7C10 14NNE6	701.561	F N D RIVET AND SQUARE ALUMINUM PLATE IN TOP OF CURB, SOUTHEAST CORNER OF DESERT INN RD. AND EL CAMINO RD. NEAR THE PC OF DESERT INN RD.	CLARK COUNTY VERTICAL CONTROL v.2003			
48			LOST 2003	CLARK COUNTY SURVEYOR'S OFFICE 5051 SOUTH PARADISE ROAD LAS VEGAS, NEVADA 89119 (702) 455-0640		CONVERSION FACTOR: METERS X $\left(\frac{3937}{1200}\right)$ = U.S. SURVEY FEET	
				REVISED 2003	SHEET 3 OF 4	21-60 NE	

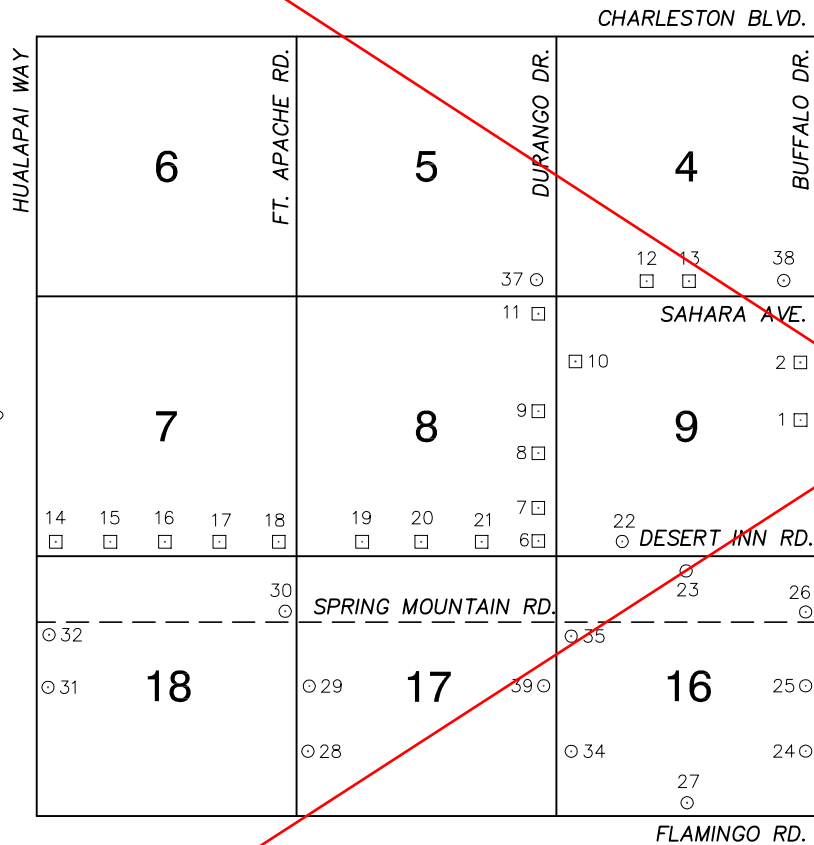
FOR REFERENCE ONLY

***2018 BENCHMARK NETWORK ADJUSTMENT SUPERSEDES THE 2003 BENCHMARK BOOK**

No.	STATION	ELEVATION (METERS)	DESCRIPTION	No.	STATION	ELEVATION (METERS)	DESCRIPTION	
60	7C10 2SWS 1997	729.274	S E T RIVET AND ROUND ALUMINUM PLATE IN TOP OF CURB, NORTHEAST CORNER OF RAINBOW BLVD. AND SAHARA AVE. NEAR THE PC OF RAINBOW BLVD.	73	0LV10 3SSE6	737.796	F N D CITY OF LAS VEGAS PIN AND PLATE IN TOP OF CURB, NORTHEAST CORNER OF SAHARA AVE. AND MONTESSOURI ST. NEAR THE PC OF SAHARA AVE., "NOT STAMPED".	
61	8C10 10W4 1998	765.885	S E T RIVET AND ROUND ALUMINUM PLATE IN TOP OF CURB, NORTHEAST CORNER OF BUFFALO DR. AND EDNA AVE. NEAR THE PC OF EDNA AVE.	74	0LV10 3SSW6	756.589	F N D CITY OF LAS VEGAS PIN AND PLATE IN TOP OF CURB, NORTHEAST CORNER SAHARA AVE. AND PIONEER WAY NEAR THE PC OF SAHARA AVE., "NOT STAMPED".	
62	8C10 10SWW6 1998	763.520	S E T RIVET AND ROUND ALUMINUM PLATE IN TOP OF CURB, SOUTHEAST CORNER OF BUFFALO DR. AND PALMYRA AVE. 8' SOUTH OF THE PC OF BUFFALO DR.	75	0LV10 1SES	677.364	F N D NDOT BRASS CAP IN TOP OF CURB. NORTHWEST CORNER OF SAHARA AVE. AND DECATUR BLVD., STAMPED "STA A3 18+85.62"	
63	C1011D2	728.623	F N D CITY OF LAS VEGAS PIN AND PLATE IN TOP OF CURB, SOUTHEAST CORNER OF SAHARA AVE AND RAINBOW BLVD. NEAR THE PC OF RAINBOW BLVD.	76	0LV10 1S4	686.974	F N D CITY OF LAS VEGAS PIN AND PLATE IN TOP OF CURB, NORTHEAST CORNER SAHARA AVE. AND LINDELL RD.	
64	0C10 10S4 2000	740.984	S E T RIVET AND ROUND ALUMINUM PLATE IN TOP OF CURB, NORTHEAST CORNER OF DESERT INN RD. AND TENAYA WAY NEAR THE PC OF DESERT INN RD.	77	2LV10 1SSW6	694.656	F N D CITY OF LAS VEGAS PIN AND PLATE IN TOP OF CURB, NORTHWEST CORNER OF SAHARA AVE. AND DUNEVILLE RD. NEAR THE PC OF SAHARA AVE.	
65	0C10 12S4 2000	685.779	S E T RIVET AND ROUND ALUMINUM PLATE IN TOP OF CURB, NORTHEAST CORNER OF DESERT INN RD. AND LINDELL RD. NEAR THE PC OF DESERT INN RD.	78	0LV10 1NWW6	694.961	F N D CITY OF LAS VEGAS PIN AND PLATE IN TOP OF CURB, EAST SIDE OF JONES BLVD., BETWEEN TWO DRIVEWAYS AT ADDRESS 1400 SO. JONES BLVD.	
66	0C10 12SWS 2000	698.993	S E T RIVET AND ROUND ALUMINUM PLATE IN TOP OF CURB, NORTHEAST CORNER OF DESERT INN RD. AND JONES BLVD. NEAR THE PC OF JONES BLVD.	79				
67	0C10 12SWW6 2000	698.177	S E T RIVET AND ROUND ALUMINUM PLATE IN TOP OF CURB, NORTHEAST CORNER OF JONES BLVD. AND PALMYRA AVE. NEAR THE PC OF JONES BLVD.	80				
68	0C10 12NWW6 2000	698.192	S E T RIVET AND ROUND ALUMINUM PLATE IN TOP OF CURB, NORTHEAST CORNER OF JONES BLVD. AND ELDORA AVE. NEAR THE PC OF JONES BLVD.	81				
69	0C10 11S4 2000	707.935	S E T RIVET AND ROUND ALUMINUM PLATE IN TOP OF CURB, NORTHEAST CORNER OF DESERT INN RD. AND TORREY PINES DR. NEAR THE PC OF DESERT INN RD.	82				
70	0C10 11SWS 2000	722.975	S E T RIVET AND ROUND ALUMINUM PLATE IN TOP OF CURB, NORTHEAST CORNER OF DESERT INN RD. AND RAINBOW BLVD. NEAR THE PC OF DESERT INN RD.	83				
71	0C10 10SSW6 2000	751.047	S E T RIVET AND ROUND ALUMINUM PLATE IN TOP OF CURB, NORTH SIDE OF DESERT INN RD. NEAR THE ALIGNMENT PIONEER WAY. 3' SOUTH OF A STREET LIGHT.	CLARK COUNTY VERTICAL CONTROL v.2003				
72	0C10 10SWS 2000	759.891	S E T RIVET AND ROUND ALUMINUM PLATE IN TOP OF CURB, NORTHEAST CORNER OF DESERT INN RD. AND BUFFALO DR. NEAR THE PC OF DESERT INN RD.	CLARK COUNTY SURVEYOR'S OFFICE 5051 SOUTH PARADISE ROAD LAS VEGAS, NEVADA 89119 (702) 455-0640		CONVERSION FACTOR: METERS X $\left(\frac{3937}{1200}\right)$ = U.S. SURVEY FEET		
						REVISED 2003	SHEET 4 OF 4	21-60 NE

FOR REFERENCE ONLY
***2018 BENCHMARK NETWORK ADJUSTMENT SUPERSEDES THE 2003 BENCHMARK BOOK**

**Township 21 South, Range 60 East
 Northwest Quarter**



NORTH AMERICAN VERTICAL
 DATUM OF 1988
 - ALL ELEVATIONS IN METERS -

No.	STATION	ELEVATION (METERS)	DESCRIPTION
1	7C10 9E4	767.551	F N D RIVET AND SQUARE ALUMINUM PLATE IN TOP OF CURB, NORTH CURB LINE OF CUL-DE-SAC, 250' NORTH OF EDNA AVE. WEST SIDE OF BUFFALO DR. ACTUAL STAMPED "7C10 9NE4".
2	7C10 9NEE6	768.240	F N D RIVET AND SQUARE ALUMINUM PLATE IN TOP OF CURB, SOUTHWEST CORNER OF BUFFALO DR. AND ELDORA AVE. NEAR THE PC OF BUFFALO DR.
3			LOST 2003
4			LOST 2003
5			LOST 2003
6	1LV10 8SWS	797.924	F N D CITY OF LAS VEGAS PIN AND PLATE IN TOP OF CURB, NORTHWEST CORNER OF DURANGO DR. AND DESERT INN RD. NEAR THE PC OF DURANGO DR.
7	1LV10 8SEE6	801.908	F N D CITY OF LAS VEGAS PIN AND PLATE IN TOP OF CURB, WEST SIDE OF DURANGO DR. AND 900' NORTH OF DESERT INN RD.
8	1LV10 8E4A	805.302	F N D CITY OF LAS VEGAS PIN AND PLATE IN TOP OF CURB, SOUTHWEST CORNER OF DURANGO DR. AND PADDLE WHEEL WAY NEAR THE PC OF DURANGO.
9	1LV10 8E4	808.630	F N D CITY OF LAS VEGAS PIN AND PLATE IN TOP OF CURB, NORTHWEST CORNER OF DURANGO DR. AND STARBOARD DR. NEAR THE PC OF DURANGO DR.
10	2C10 9NWW6	809.842	F N D RIVET AND SQUARE ALUMINUM PLATE IN TOP OF CURB, NORTHEAST CORNER OF DURANGO DR. AND ELDORA ST. NEAR THE PC OF DURANGO DR.
11	2C10 8NES	811.591	F N D RIVET AND SQUARE ALUMINUM PLATE IN TOP OF CURB, SOUTHWEST CORNER OF DURANGO DR. AND SAHARA AVE. NEAR THE PC OF DURANGO DR.

CLARK COUNTY VERTICAL CONTROL v.2003

CLARK COUNTY SURVEYOR'S OFFICE
 5051 SOUTH PARADISE ROAD
 LAS VEGAS, NEVADA 89119
 (702) 455-0640

CONVERSION FACTOR:
 METERS X $\left(\frac{3937}{1200}\right)$ = U.S. SURVEY FEET

REVISED 09/01/2006	SHEET 1 OF 3	21-60 NW
-----------------------	-----------------	-------------

FOR REFERENCE ONLY

***2018 BENCHMARK NETWORK ADJUSTMENT SUPERSEDES THE 2003 BENCHMARK BOOK**

No.	STATION	ELEVATION (METERS)	DESCRIPTION	No.	STATION	ELEVATION (METERS)	DESCRIPTION
12	1LV10 4SSW6	795.831	F CITY OF LAS VEGAS PIN AND PLATE IN TOP OF CURB, NORTH SIDE OF SAHARA AVE. NEAR THE ALIGNMENT OF TOMSIK ST.	25	8C10 16E4 1998	753.274	S RIVET AND ROUND ALUMINUM PLATE IN TOP OF CURB, NORTHWEST CORNER OF BUFFALO DR. AND TWAIN AVE. NEAR THE PC OF BUFFALO DR.
13	1LV10 4S4	784.688	F CITY OF LAS VEGAS PIN AND PLATE IN TOP OF CURB, NORTH SIDE OF SAHARA AVE. NEAR CIMARRON RD. 600' EAST OF CIMARRON RD.	26	8C10 16NEE6 1998	756.133	S RIVET AND ROUND ALUMINUM PLATE IN TOP OF CURB, NORTHWEST CORNER OF BUFFALO DR. AND SPRING MOUNTAIN RD. NEAR THE PC OF BUFFALO DR.
14	1LV10 7SWS	859.957	F CITY OF LAS VEGAS PIN AND PLATE IN TOP OF CURB, NORTHEAST CORNER OF HUALAPAI WAY. AND DESERT INN RD. NEAR 1/2 DELTA.	27	8C10 16S4 1998	761.789	S RIVET AND ROUND ALUMINUM PLATE IN TOP OF CURB, NORTHEAST CORNER OF FLAMINGO RD. AND CIMARRON RD. NEAR THE PC OF FLAMINGO RD.
15	1LV10 7SSW6	852.045	F CITY OF LAS VEGAS PIN AND PLATE IN TOP OF CURB, NORTH SIDE OF DESERT INN RD. 200' WEST OF MOUNTAIN BLUE BIRD ST.	28	8C10 17SWW6 1998	812.077	S RIVET AND ROUND ALUMINUM PLATE IN TOP OF CURB, SOUTHEAST CORNER OF FORT APACHE RD. AND VIKING RD. NEAR THE PC OF FORT APACHE RD.
16	1LV10 7S4	845.042	F CITY OF LAS VEGAS PIN AND PLATE IN TOP OF CURB, NORTHWEST CORNER OF DESERT INN RD. AND GRAND CANYON DR. NEAR 1/2 DELTA.	29	8C10 17W4 1998	816.716	S RIVET AND ROUND ALUMINUM PLATE IN TOP OF CURB, SOUTHEAST CORNER OF FORT APACHE RD. AND TWAIN AVE. NEAR THE PC OF FORT APACHE RD.
17	1LV10 7SSE6	839.753	F CITY OF LAS VEGAS PIN AND PLATE IN TOP OF CURB, NORTHWEST CORNER OF DESERT INN RD. AND SURFLINE DR. NEAR 1/2 DELTA.	30	8C10 18NEE6 1998	825.620	S RIVET AND ROUND ALUMINUM PLATE IN TOP OF CURB, NORTHWEST CORNER OF FORT APACHE RD. AND SPRING MOUNTAIN RD. NEAR THE PC OF FORT APACHE RD.
18	1LV10 7SES	832.233	F CITY OF LAS VEGAS PIN AND PLATE IN TOP OF CURB, NORTHWEST CORNER OF DESERT INN RD. AND FORT APACHE RD. NEAR 1/2 DELTA.	31	8C10 18W4 1998	848.870	S RIVET AND ROUND ALUMINUM PLATE IN TOP OF CURB, NORTHEAST CORNER OF HUALAPAI WAY. AND TWAIN AVE. NEAR THE PC OF HUALAPAI WAY.
19	1LV10 8SSW6	823.602	F CITY OF LAS VEGAS PIN AND PLATE IN TOP OF CURB, NORTHWEST CORNER OF DESERT INN RD. AND HIDDEN CANYON LN. NEAR 1/2 DELTA.	32	8C10 18NWW6 1998	854.110	S RIVET AND ROUND ALUMINUM PLATE IN TOP OF CURB, SOUTHEAST CORNER OF HUALAPAI WAY. AND SPRING MOUNTAIN RD. NEAR THE PC OF HUALAPAI WAY.
20	1LV10 8S4	816.844	F CITY OF LAS VEGAS PIN AND PLATE IN TOP OF CURB, NORTHWEST CORNER OF DESERT INN RD. AND CRYSTAL WATER WAY NEAR 1/2 DELTA.	33			LOST 2006
21	1LV10 8SSE6	807.871	F CITY OF LAS VEGAS PIN AND PLATE IN TOP OF CURB, NORTHWEST CORNER OF DESERT INN RD. AND MARINER BAY NEAR 1/2 DELTA.	34	8C10 16SWW6 1998	781.920	S RIVET AND ROUND ALUMINUM PLATE IN THE CONCRETE BASE OF A LVVWD VENT PIPE, SOUTHEAST QUADRANT OF DURANGO DR. AND VIKING RD.
22	0C10 9SSW6 2000	788.584	S RIVET AND ROUND ALUMINUM PLATE IN TOP OF CURB, NORTH SIDE OF DESERT INN RD. NEAR THE ALIGNMENT OF GAGNIER AVE. 3' EAST OF END OF CONCRETE.	35	8C10 16NWW6 1998	792.696	S RIVET AND ROUND ALUMINUM PLATE IN TOP OF CURB, SOUTHEAST CORNER OF DURANGO DR. AND SPRING MOUNTAIN RD. 50' SOUTH OF THE PC OF DURANGO DR.
23	8C10 16N4 1998	779.148	S RIVET AND ROUND ALUMINUM PLATE IN TOP OF CURB, SOUTHEAST CORNER OF DESERT INN RD. AND CIMARRON RD. NEAR THE PC OF CIMARRON RD.	CLARK COUNTY VERTICAL CONTROL v.2003			
24	8C10 16SEE6 1998	749.347	S RIVET AND ROUND ALUMINUM PLATE IN TOP OF CURB, SOUTHWEST CORNER OF BUFFALO DR. AND VIKING RD. NEAR THE PC OF BUFFALO DR.	CLARK COUNTY SURVEYOR'S OFFICE 5051 SOUTH PARADISE ROAD LAS VEGAS, NEVADA 89119 (702) 455-0640			CONVERSION FACTOR: METERS x $\left(\frac{3937}{1200}\right)$ = U.S. SURVEY FEET
			REVISED 09/01/2006		SHEET 2 OF 3		21-60 NW

FOR REFERENCE ONLY

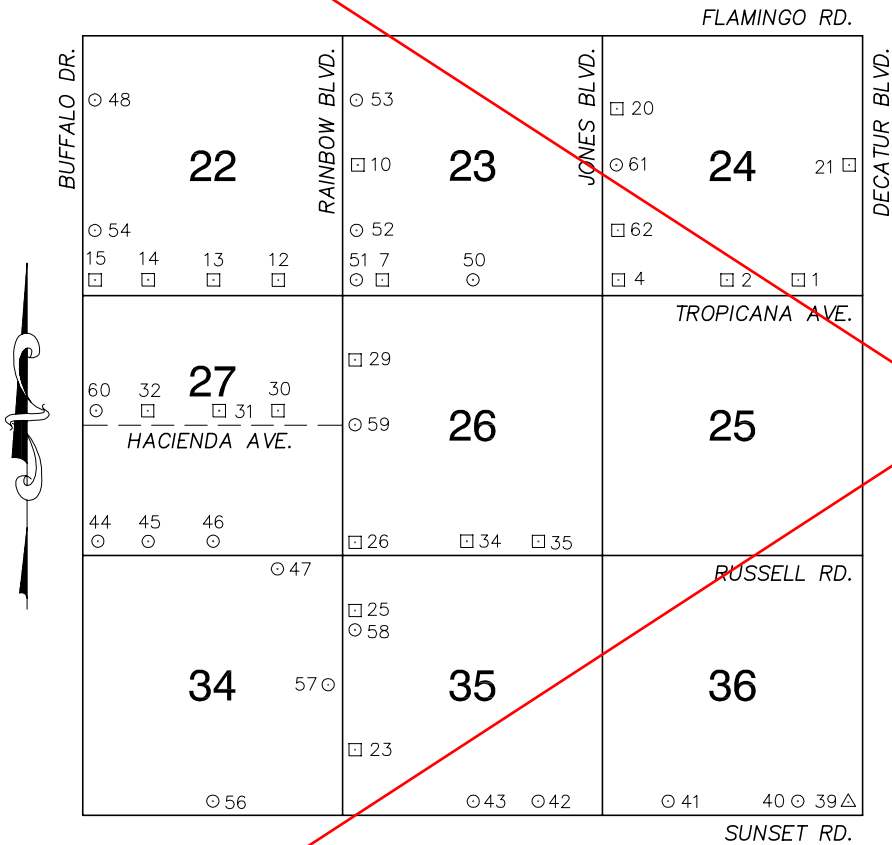
***2018 BENCHMARK NETWORK ADJUSTMENT SUPERSEDES THE 2003 BENCHMARK BOOK**

No.	STATION	ELEVATION (METERS)	DESCRIPTION	No.	STATION	ELEVATION (METERS)	DESCRIPTION
36			LOST 2003	49			
37	1LV10 5SES	811.582	F N D CITY OF LAS VEGAS PIN AND PLATE IN TOP OF CURB, NORTHWEST CORNER OF DURANGO DR. AND SAHARA AVE.	50			
38	0LV10 4SSE6	779.493	F N D CITY OF LAS VEGAS PIN AND PLATE IN TOP OF CURB, NORTHWEST CORNER OF SAHARA AVE. AND MILLER LN.	51			
39	8C10 17E4 1998	786.846	F N D RIVET AND ROUND ALUMINUM PLATE IN TOP OF CURB, SOUTHWEST CORNER OF DURANGO DR. AND TWAIN AVE. NEAR THE PC OF DURANGO DR.	52			
40				53			
41				54			
42				55			
43				56			
44				57			
45				58			
46				59			
47				CLARK COUNTY VERTICAL CONTROL v.2003			
48				CLARK COUNTY SURVEYOR'S OFFICE 5051 SOUTH PARADISE ROAD LAS VEGAS, NEVADA 89119 (702) 455-0640		CONVERSION FACTOR: METERS X $\left(\frac{3937}{1200}\right)$ = U.S. SURVEY FEET	
				REVISED 2003	SHEET 3 OF 3	21-60 NW	

FOR REFERENCE ONLY

*2018 BENCHMARK NETWORK ADJUSTMENT SUPERSEDES THE 2003 BENCHMARK BOOK

Township 21 South, Range 60 East
Southeast Quarter



NORTH AMERICAN VERTICAL
DATUM OF 1988
- ALL ELEVATIONS IN METERS -

No.	STATION	ELEVATION (METERS)	DESCRIPTION
1	7C10 24SSE6	693.711	RIVET AND SQUARE ALUMINUM PLATE IN TOP OF SOUTHWEST CONCRETE BASE FOR POWER COMPANY METAL TOWER, LOCATED 210' NORTH OF TROPICANA AVE. AT EDMOND ST.
2	7C10 24S4	693.853	RIVET AND SQUARE ALUMINUM PLATE IN TOP OF CURB, NORTH SIDE OF TROPICANA AVE. 130' WEST OF LINDELL ST. ALIGNMENT.
3			LOST 2003
4	7C10 24SWS	702.346	RIVET AND SQUARE ALUMINUM PLATE IN TOP OF CURB, NORTHEAST CORNER OF TROPICANA AVE. AND JONES BLVD. NEAR THE PC OF TROPICANA AVE.
5			LOST 2003
6			LOST 2003
7	7C10 23SSW6	713.761	RIVET AND SQUARE ALUMINUM PLATE IN TOP OF CURB, NORTHWEST CORNER OF TROPICANA AVE. AND A BRIDGE 0.2 MILES EAST OF RAINBOW BLVD.
8			LOST 2003
9			LOST 2003
10	7C10 23W4	716.941	RIVET AND SQUARE ALUMINUM PLATE IN TOP OF CURB, EAST SIDE OF RAINBOW BLVD. 0.5 MILES NORTH OF TROPICANA AVE.
11			LOST 2003

CLARK COUNTY VERTICAL CONTROL v.2003

CLARK COUNTY SURVEYOR'S OFFICE
5051 SOUTH PARADISE ROAD
LAS VEGAS, NEVADA 89119
(702) 455-0640

CONVERSION FACTOR:
METERS X $\left(\frac{3937}{1200}\right)$ = U.S. SURVEY FEET

REVISED 2003 SHEET 1 OF 4 21-60 SE

FOR REFERENCE ONLY

***2018 BENCHMARK NETWORK ADJUSTMENT SUPERSEDES THE 2003 BENCHMARK BOOK**

No.	STATION	ELEVATION (METERS)	DESCRIPTION	No.	STATION	ELEVATION (METERS)	DESCRIPTION	
12	7C10 22SSE6	721.359	F N D RIVET AND SQUARE ALUMINUM PLATE IN TOP OF CURB, NORTHEAST CORNER OF TROPICANA AVE. AND KNOLLWOOD DR. NEAR THE PC OF TROPICANA AVE.	25	2C10 35NWW6	735.492	F N D RIVET AND SQUARE ALUMINUM PLATE IN CONCRETE MONUMENT, NORTHEAST CORNER OF RAINBOW BLVD. AND OQUENDO RD. 50' EAST AND 30' NORTH OF PI.	
13	7C10 22S4	727.837	F N D RIVET AND SQUARE ALUMINUM PLATE IN TOP OF CURB, NORTHEAST CORNER OF TROPICANA AVE. AND TENAYA WAY NEAR THE PC OF TROPICANA AVE.	26	4C10 26SWS	731.197	F N D RIVET AND SQUARE ALUMINUM PLATE IN 10'X8' CONCRETE BASE OF LARGE METAL POWER POLE, NORTHEAST CORNER OF RAINBOW BLVD. AND RUSSELL RD.	
14	7C10 22SSW6	734.800	F N D RIVET AND SQUARE ALUMINUM PLATE IN TOP OF CURB, NORTHEAST CORNER OF TROPICANA AVE. AND HARTFIELD LN. NEAR THE PC OF TROPICANA AVE.	27			LOST 2003	
15	7C10 22SWS	740.312	F N D RIVET AND SQUARE ALUMINUM PLATE IN TOP OF CURB, NORTHEAST CORNER OF TROPICANA AVE. AND BUFFALO DR. 21' EAST OF THE PC OF TROPICANA AVE.	28			LOST 2003	
16			LOST 2003	29	2C10 26NWW6	721.900	F N D RIVET AND SQUARE ALUMINUM PLATE IN AN ELECTRICAL TRANSFORMER PAD, 100' SOUTH OF ENTRANCE TO "THE TRAILS" APARTMENTS, EAST SIDE OF RAINBOW.	
17			LOST 2003	30	2C10 27E6	729.071	F N D RIVET AND SQUARE ALUMINUM PLATE IN TOP OF CURB, NORTHEAST CORNER OF HACIENDA AVE. AND MONTESSOURI ST.	
18			LOST 2003	31	2C10 27C4	731.748	F N D RIVET AND SQUARE ALUMINUM PLATE IN TOP OF CURB, NORTHEAST CORNER OF HACIENDA AVE. AND SPANISH TRAIL LANE.	
19			LOST 2003	32	2C10 27W6	735.145	F N D RIVET AND SQUARE ALUMINUM PLATE IN TOP OF CURB, NORTH SIDE OF HACIENDA AVE. AT PIONEER WAY.	
20	7C10 24NWW6	698.099	F N D 2" DOME HEAD BRASS CAP REFERENCE MONUMENT IN TOP OF CURB, NORTHEAST CORNER OF JONES BLVD. AND GUNDERSON BLVD.	33			LOST 2003	
21	7C10 24E4	688.189	F N D RIVET AND SQUARE ALUMINUM PLATE IN TOP OF CURB, NORTHWEST CORNER OF DECATUR BLVD. AND HARMON AVE. NEAR THE PC OF DECATUR BLVD.	34	4C10 26S4	723.227	F N D RIVET AND SQUARE ALUMINUM PLATE SOUTHEAST CORNER OF A CONCRETE ELECTRIC VAULT/TRANSFORMER PAD #(SW 2141) 50' NORTH OF RUSSELL RD. AND 110' WEST OF TORREY PINES WAY.	
22			LOST 2003	35	4C10 26SSE6	718.192	F N D RIVET AND SQUARE ALUMINUM PLATE IN TOP OF CURB, NORTHWEST CORNER OF RUSSELL RD. AND EL CAMINO RD. NEAR THE PC OF RUSSELL RD.	
23	2C10 35SWW6	743.844	F N D RIVET AND SQUARE ALUMINUM PLATE IN A CONCRETE MONUMENT, NORTHEAST CORNER OF RAINBOW BLVD. AND POST RD. 50' EAST AND 30' NORTH OF INTERSECTION.	CLARK COUNTY VERTICAL CONTROL v.2003				
24			LOST 2003	CLARK COUNTY SURVEYOR'S OFFICE 5051 SOUTH PARADISE ROAD LAS VEGAS, NEVADA 89119 (702) 455-0640			CONVERSION FACTOR: METERS X $\left(\frac{3937}{1200}\right)$ = U.S. SURVEY FEET	
				REVISED 02/14/2005		SHEET 2 OF 4		21-60 SE

FOR REFERENCE ONLY

***2018 BENCHMARK NETWORK ADJUSTMENT SUPERSEDES THE 2003 BENCHMARK BOOK**

No.	STATION	ELEVATION (METERS)	DESCRIPTION	No.	STATION	ELEVATION (METERS)	DESCRIPTION	
36			LOST 2003	49			LOST 2003	
37			LOST 2003	50	8C10 23S4 1998	710.732	S E T RIVET AND ROUND ALUMINUM PLATE IN TOP OF CURB, NORTHEAST CORNER OF TROPICANA AVE. AND TORREY PINES DR. NEAR THE PC OF TROPICANA AVE.	
38			LOST 2003	51	7C10 23SWS 1997	716.672	F N D RIVET AND ROUND ALUMINUM PLATE IN TOP OF CURB, NORTHEAST CORNER OF RAINBOW BLVD. AND TROPICANA AVE. NEAR THE PC OF RAINBOW BLVD.	
39	GIS 943	709.572	F N D 2" BRASS CAP IN A CONCRETE MONUMENT, NORTHWEST CORNER OF SUNSET RD. AND DECATUR BLVD. 75' WEST OF DECATUR BLVD. AND 100' NORTH OF SUNSET RD.	52	7C10 23SWW6 1997	718.457	S E T RIVET AND ROUND ALUMINUM PLATE IN TOP OF CURB, NORTHEAST CORNER OF RAINBOW BLVD. AND SPRING VALLEY PKWY. SOUTH NEAR THE PC OF RAINBOW BLVD.	
40	7C10 36SSE6 1997	713.132	S E T RIVET AND ROUND ALUMINUM PLATE IN CONCRETE MONUMENT, NORTHEAST CORNER OF EDMOND ST. AND SUNSET RD. 45' EAST AND 70' NORTH OF THE INTERSECTION.	53	7C10 23NWW6 1997	716.594	S E T RIVET AND ROUND ALUMINUM PLATE IN TOP OF CURB, NORTHEAST CORNER OF RAINBOW BLVD. AND SPRING VALLEY PKWY. NORTH NEAR THE PC OF RAINBOW BLVD.	
41	7C10 36SSW6 1997	722.002	S E T RIVET AND ROUND ALUMINUM PLATE IN CONCRETE MONUMENT, NORTHWEST CORNER OF SUNSET RD. AND DUNEVILLE ST. 50' WEST AND 50' NORTH OF THE INTERSECTION.	54	8C10 22SSW6 1998	742.090	S E T RIVET AND ROUND ALUMINUM PLATE IN TOP OF CURB, EAST SIDE OF BUFFALO DR. 0.25 MILES NORTH OF TROPICANA AVE. NEAR THE ALIGNMENT OF TOMPKINS AVE.	
42	7C10 35SSE6 1997	730.903	S E T RIVET AND ROUND ALUMINUM PLATE IN CONCRETE MONUMENT, NORTHEAST CORNER OF SUNSET RD. AND EL CAMINO RD. 50' EAST AND 50' NORTH OF THE INTERSECTION.	55			LOST 2003	
43	7C10 35S4 1997	735.891	S E T RIVET AND ROUND ALUMINUM PLATE IN CONCRETE MONUMENT, NORTHEAST CORNER OF SUNSET RD. AND TORREY PINES DR. 50' EAST AND 50' NORTH OF THE INTERSECTION.	56	8C10 34S4 1998	758.104	S E T RIVET AND ROUND ALUMINUM PLATE IN A LVVWD CONCRETE PAD. NORTHEAST CORNER OF SUNSET RD. AND TENAYA WAY, 210' EAST AND 50' NORTH OF INTERSECTION.	
44	8C10 27SWS 1998	747.111	S E T RIVET AND ROUND ALUMINUM PLATE IN TOP OF CURB, NORTHEAST CORNER OF BUFFALO DR. AND RUSSELL RD. NEAR THE PC OF BUFFALO DR.	57	7C10 34E4 1997	739.507	S E T RIVET AND ROUND ALUMINUM PLATE IN TOP OF CURB, NORTHWEST CORNER OF RAINBOW BLVD. AND PATRICK LN. NEAR THE PC OF PATRICK LN.	
45	8C10 27SSW6 1998	743.776	S E T RIVET AND ROUND ALUMINUM PLATE IN TOP OF CURB, NORTH SIDE OF RUSSELL RD. AT PIONEER WAY, 9' EAST OF PIONEER ALIGNMENT, SOUTH OF A TELEPHONE MANHOLE IN THE SIDEWALK.	58	7C10 35NWW6 1997	735.809	S E T RIVET AND ROUND ALUMINUM PLATE IN A CONCRETE MONUMENT, SOUTHEAST CORNER OF RAINBOW BLVD. AND OQUENDO RD. NEAR A METAL POWER POLE.	
46	8C10 27S4 1998	740.013	S E T RIVET AND ROUND ALUMINUM PLATE IN TOP OF CURB, NORTHEAST CORNER OF RUSSELL RD. AND TENAYA WAY NEAR THE PC OF RUSSELL RD.	59	7C10 26W4 1997	725.048	S E T RIVET AND ROUND ALUMINUM PLATE IN TOP OF CURB, NORTHEAST CORNER OF RAINBOW BLVD. AND HACIENDA AVE., NEAR THE PC OF RAINBOW BLVD.	
47	8C10 34NNE6 1998	736.114	S E T RIVET AND ROUND ALUMINUM PLATE IN TOP OF CURB, SOUTHWEST CORNER OF RUSSELL RD. AND MONTESSOURI ST. NEAR THE PC OF RUSSELL RD.	CLARK COUNTY VERTICAL CONTROL v.2003				
48	8C10 22NWW6 1998	745.504	S E T RIVET AND ROUND ALUMINUM PLATE IN TOP OF CURB, EAST SIDE OF BUFFALO DR., 28' NORTH OF ROCHELLE AVE. ALIGNMENT.	CLARK COUNTY SURVEYOR'S OFFICE 5051 SOUTH PARADISE ROAD LAS VEGAS, NEVADA 89119 (702) 455-0640		CONVERSION FACTOR: METERS X $\left(\frac{3937}{1200}\right)$ = U.S. SURVEY FEET		
						REVISED 2003	SHEET 3 OF 4	21-60 SE

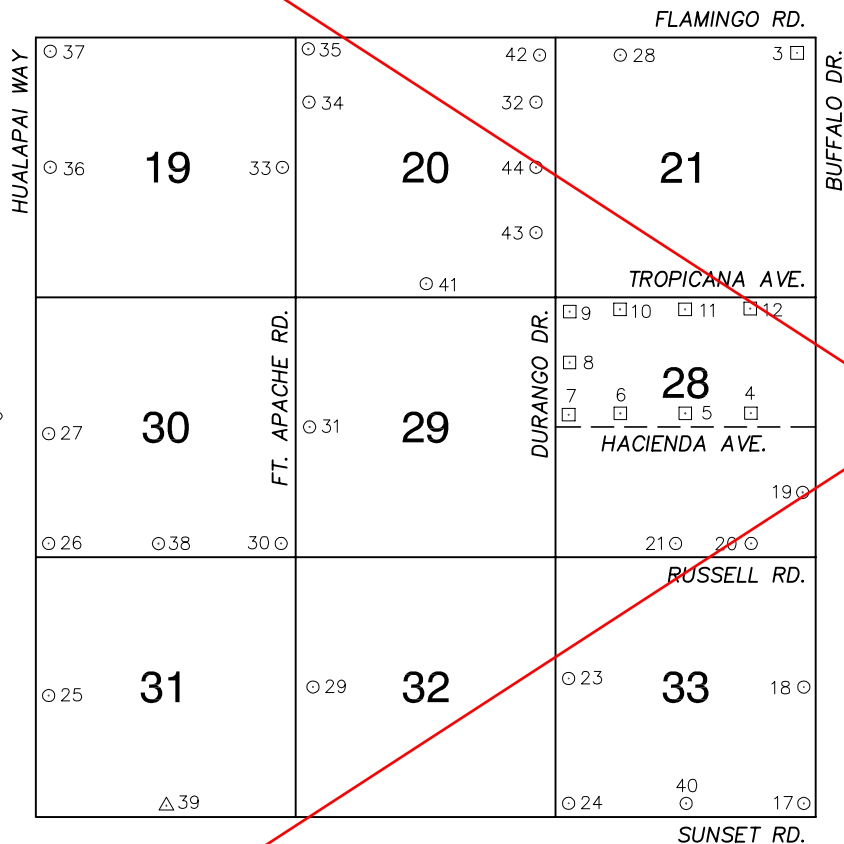
FOR REFERENCE ONLY

***2018 BENCHMARK NETWORK ADJUSTMENT SUPERSEDES THE 2003 BENCHMARK BOOK**

No.	STATION	ELEVATION (METERS)	DESCRIPTION	No.	STATION	ELEVATION (METERS)	DESCRIPTION
60	8C10 27W4 1998	736.654	SET RIVET AND ROUND ALUMINUM PLATE IN TOP OF CURB, NORTH SIDE OF HACIENDA AVE. 180' EAST OF THE PROJECTION OF BUFFALO DR.	73			
61	0C10 24W4 2000	702.241	SET RIVET AND ROUND ALUMINUM PLATE IN TOP OF CURB, NORTHEAST CORNER OF JONES BLVD. AND HARMON AVE. NEAR THE PC OF JONES BLVD.	74			
62	0C10 24SWW6	700.182	FIND RIVET AND SQUARE ALUMINUM PLATE IN TOP OF CURB, EAST SIDE OF JONES BLVD. 0.25 MILES NORTH OF TROPICANA AVE. 75' NORTH OF THE FLAMINGO WASH.	75			
63				76			
64				77			
65				78			
66				79			
67				80			
68				81			
69				82			
70				83			
71				CLARK COUNTY VERTICAL CONTROL v.2003			
72				CLARK COUNTY SURVEYOR'S OFFICE 5051 SOUTH PARADISE ROAD LAS VEGAS, NEVADA 89119 (702) 455-0640		CONVERSION FACTOR: METERS X $\left(\frac{3937}{1200}\right)$ = U.S. SURVEY FEET	
				REVISED 2003	SHEET 4 OF 4	21-60 SE	

FOR REFERENCE ONLY
***2018 BENCHMARK NETWORK ADJUSTMENT SUPERSEDES THE 2003 BENCHMARK BOOK**

**Township 21 South, Range 60 East
 Southwest Quarter**



NORTH AMERICAN VERTICAL
 DATUM OF 1988
 - ALL ELEVATIONS IN METERS -

No.	STATION	ELEVATION (METERS)	DESCRIPTION
1			LOST 2003
2			LOST 2003
3	7C10 21NES	747.152	F N D RIVET AND SQUARE ALUMINUM PLATE IN CONCRETE FOUNDATION OF ELECTRICAL CABINET, SOUTHWEST CORNER OF BUFFALO DR. AND FLAMINGO RD.
4	2C10 28E6	741.766	F N D RIVET AND SQUARE ALUMINUM PLATE IN TOP OF CURB, NORTH SIDE OF HACIENDA AVE. 0.25 MILES WEST OF BUFFALO DR.
5	2C10 28C4	746.991	F N D RIVET AND SQUARE ALUMINUM PLATE IN TOP OF CURB, NORTH SIDE OF HACIENDA AVE. AT CIMARRON RD.
6	2C10 28W6	752.816	F N D RIVET AND SQUARE ALUMINUM PLATE IN TOP OF CURB, NORTH SIDE OF HACIENDA AVE. 0.26 MILES EAST OF DURANGO DR.
7	2C10 28W4	759.744	F N D RIVET AND SQUARE ALUMINUM PLATE IN TOP OF CURB, NORTHEAST CORNER OF HACIENDA AVE. AND DURANGO DR. AT 1/2 DELTA.
8	2C10 28NWW6	763.305	F N D RIVET AND SQUARE ALUMINUM PLATE IN TOP OF CURB, EAST SIDE OF DURANGO DR. NEAR RENO AVE.
9	2C10 28NWS	765.607	F N D RIVET AND SQUARE ALUMINUM PLATE IN TOP OF CURB, SOUTH SIDE OF TROPICANA AVE. AND 200' EAST OF DURANGO DR.
10	2C10 28NNW6	759.357	F N D RIVET AND SQUARE ALUMINUM PLATE IN TOP OF CURB, SOUTH SIDE OF TROPICANA AVE AND 0.25 MILES EAST OF DURANGO DR.
11	2C10 28N4	752.145	F N D RIVET AND SQUARE ALUMINUM PLATE IN TOP OF CURB, SOUTH SIDE OF TROPICANA AVE. NEAR CIMARRON RD. ALIGNMENT.

CLARK COUNTY VERTICAL CONTROL v.2003

CLARK COUNTY SURVEYOR'S OFFICE
 5051 SOUTH PARADISE ROAD
 LAS VEGAS, NEVADA 89119
 (702) 455-0640

CONVERSION FACTOR:
 METERS X $\left(\frac{3937}{1200}\right)$ = U.S. SURVEY FEET

REVISED 09/01/2006	SHEET 1 OF 3	21-60 SW
-----------------------	-----------------	--------------------

FOR REFERENCE ONLY

***2018 BENCHMARK NETWORK ADJUSTMENT SUPERSEDES THE 2003 BENCHMARK BOOK**

No.	STATION	ELEVATION (METERS)	DESCRIPTION	No.	STATION	ELEVATION (METERS)	DESCRIPTION
12	2C10 28NNE6	744.840	F N D RIVET AND SQUARE ALUMINUM PLATE IN TOP OF CURB, SOUTH SIDE OF TROPICANA AVE. AND 0.25 MILES WEST OF BUFFALO DR.	25	8C10 31W4 1998	813.443	S E T RIVET AND ROUND ALUMINUM PLATE IN A LVVWD (AIR-VAC) VENT CONCRETE PAD, IN THE SOUTHEAST QUADRANT OF HUALAPAI WAY AND PATRICK LN. 135' SOUTH AND 48' EAST OF THE INTERSECTION.
13			LOST 2003	26	8C10 30SWS 1998	819.445	S E T RIVET AND ROUND ALUMINUM PLATE IN A CONCRETE MONUMENT, NORTHEAST QUADRANT OF HUALAPAI WAY AND RUSSELL RD. 135' EAST AND 66 NORTH OF THE INTERSECTION.
14			LOST 2003	27	8C10 30W4 1998	834.032	S E T RIVET AND ROUND ALUMINUM PLATE IN A CONCRETE MONUMENT, SOUTHEAST QUADRANT OF HUALAPAI WAY AND HACIENDA AVE. 83' SOUTH AND 101' EAST OF THE INTERSECTION.
15			LOST 2003	28	8C10 21NNW6 1998	770.630	S E T RIVET AND ROUND ALUMINUM PLATE IN TOP OF CURB, SOUTHWEST CORNER OF FLAMINGO RD. AND GAGNIER BLVD. NEAR THE PC OF FLAMINGO RD.
16			LOST 2003	29	8C10 32W4 1998	782.600	S E T RIVET AND ROUND ALUMINUM PLATE IN A CONCRETE MONUMENT, NORTHEAST CORNER OF FORT APACHE RD. AND PATRICK LN.
17	8C10 33SES 1998	767.458	S E T RIVET AND ROUND ALUMINUM PLATE IN A LVVWD (AIR-VAC) VENT CONCRETE PAD, IN THE NORTHWEST QUADRANT OF BUFFALO DR. AND SUNSET RD. 46' WEST AND 134' NORTH OF THE INTERSECTION.	30	8C10 30SES 1998	790.636	S E T RIVET AND ROUND ALUMINUM PLATE IN A CONCRETE MONUMENT, NORTHWEST CORNER OF FORT APACHE RD. AND RUSSELL RD. 47' NORTH AND 110' WEST
18	8C10 33E4 1998	757.773	S E T RIVET AND ROUND ALUMINUM PLATE IN A CONCRETE MONUMENT, NORTHWEST QUADRANT OF PATRICK LN. AND BUFFALO DR. 57' WEST AND 43' NORTH OF THE INTERSECTION.	31	8C10 29W4 1998	795.269	S E T RIVET AND ROUND ALUMINUM PLATE IN A CONCRETE MONUMENT, SOUTHEAST CORNER OF FORT APACHE RD. AND HACIENDA AVE.
19	8C10 28SEE6 1998	741.693	S E T RIVET AND ROUND ALUMINUM PLATE IN TOP OF CURB, NORTHWEST CORNER OF BUFFALO DR. AND DIABLO DR. NEAR THE PC OF BUFFALO DR.	32	8C10 20NEE6 2000	775.616	S E T RIVET AND ROUND ALUMINUM PLATE IN TOP OF CURB, SOUTHWEST CORNER OF DURANGO DR. AND ROCHELLE AVE. NEAR THE PC OF DURANGO DR.
20	8C10 28SSE6 1998	750.084	S E T RIVET AND ROUND ALUMINUM PLATE IN TOP OF CURB, NORTH SIDE OF RUSSELL RD. NEAR THE ALIGNMENT OF WARBONNET WAY.	33	8C10 19E4 1998	800.514	S E T RIVET AND ROUND ALUMINUM PLATE IN A CONCRETE ELECTRICAL VAULT, SOUTHWEST CORNER OF FORT APACHE RD. AND PEACE WAY.
21	8C10 28S4 1998	753.149	S E T RIVET AND ROUND ALUMINUM PLATE IN THE SOUTHEAST CORNER OF A CONCRETE ELECTRICAL VAULT 13' X 34' NORTH OF RUSSELL RD. 290' WEST OF E.O. AND 100' EAST OF THE EAST SLOPE OF THE DETENTION BASIN.	34	8C10 20NWW6 1998	803.657	S E T RIVET AND ROUND ALUMINUM PLATE IN TOP OF CURB, NORTHEAST CORNER OF FORT APACHE RD. AND ROCHELLE AVE. NEAR THE PC OF FORT APACHE RD.
22			LOST 2006	35	8C10 20NWS 1998	807.055	S E T RIVET AND ROUND ALUMINUM PLATE IN A CONCRETE ELECTRICAL VAULT, SOUTHEAST CORNER OF FORT APACHE RD. AND FLAMINGO RD. 190' EAST OF FORT APACHE RD.
23	8C10 33W4 1998	769.022	S E T RIVET AND ROUND ALUMINUM PLATE IN THE SOUTHWEST CORNER OF A CONCRETE ELECTRICAL VAULT 13' X 34' 30' EAST OF THE EO OF DURANGO DR. AND 100' NORTH OF THE ALIGNMENT OF PATRICK LN.	CLARK COUNTY VERTICAL CONTROL v.2003			
24	8C10 33SWS 1998	781.751	S E T RIVET AND ROUND ALUMINUM PLATE IN A CONCRETE ELECTRICAL VAULT, NORTHEAST QUADRANT OF SUNSET RD. AND DURANGO DR.	CLARK COUNTY SURVEYOR'S OFFICE 5051 SOUTH PARADISE ROAD LAS VEGAS, NEVADA 89119 (702) 455-0640			CONVERSION FACTOR: METERS X $\left(\frac{3937}{1200}\right)$ = U.S. SURVEY FEET
			REVISED 09/01/2006		SHEET 2 OF 3		21-60 SW

FOR REFERENCE ONLY

***2018 BENCHMARK NETWORK ADJUSTMENT SUPERSEDES THE 2003 BENCHMARK BOOK**

No.	STATION	ELEVATION (METERS)	DESCRIPTION	No.	STATION	ELEVATION (METERS)	DESCRIPTION
36	8C10 19W4 1998	834.674	S E T RIVET AND ROUND ALUMINUM PLATE IN A CONCRETE MONUMENT, SOUTHEAST CORNER OF HUALAPAI WAY AND HARMON AVE. 70' SOUTH AND 150' EAST.	49			
37	0C10 19NWS 2000	837.677	S E T RIVET AND ROUND ALUMINUM PLATE IN AN ELECTRICAL TRANSFORMER PAD, 40' SOUTH OF FLAMINGO RD. AND 150' EAST OF HUALAPAI WAY.	50			
38	8C10 30S4 1998	807.986	S E T RIVET AND ROUND ALUMINUM PLATE IN A CONCRETE MONUMENT, NORTHWEST CORNER OF RUSSELL RD. AND GRAND CANYON DR. 180' WEST AND 50' NORTH.	51			
39	GIS 841	790.718	F N D 2" BRASS CAP IN A CONCRETE MONUMENT, NORTHWEST CORNER OF SUNSET RD. AND GRAND CANYON DR. STAMPED "GIS 841 RLS 4743".	52			
40	8C10 33S4 1998	775.423	S E T RIVET AND ROUND ALUMINUM PLATE IN A CONCRETE MONUMENT, NORTHEAST CORNER OF SUNSET RD. AND CIMARRON RD.	53			
41	8C10 20S4 1998	779.486	S E T RIVET AND ROUND ALUMINUM PLATE IN TOP OF CURB, NORTHEAST CORNER OF TROPICANA AVE. AND EL CAPITAN WAY. NEAR THE PC OF TROPICANA AVE.	54			
42	8C10 20NES 1998	778.533	S E T RIVET AND ROUND ALUMINUM PLATE IN TOP OF CURB, SOUTHWEST CORNER OF DURANGO DR. AND FLAMINGO RD. NEAR THE PC OF FLAMINGO DR.	55			
43	8C10 20SEE6 1998	769.767	S E T RIVET AND ROUND ALUMINUM PLATE IN TOP OF CURB, WEST SIDE OF DURANGO DR. 37' NORTH OF THE ALIGNMENT OF TOMPKINS AVE.	56			
44	8C10 20E4 1998	771.713	S E T RIVET AND ROUND ALUMINUM PLATE IN TOP OF CURB, SOUTHWEST CORNER OF DURANGO DR. AND PEACE WAY NEAR THE PC OF DURANGO DR.	57			
45				58			
46				59			
47				CLARK COUNTY VERTICAL CONTROL v.2003			
48				CLARK COUNTY SURVEYOR'S OFFICE 5051 SOUTH PARADISE ROAD LAS VEGAS, NEVADA 89119 (702) 455-0640		CONVERSION FACTOR: METERS X $\left(\frac{3937}{1200}\right)$ = U.S. SURVEY FEET	
				REVISED 2003	SHEET 3 OF 3	21-60 SW	